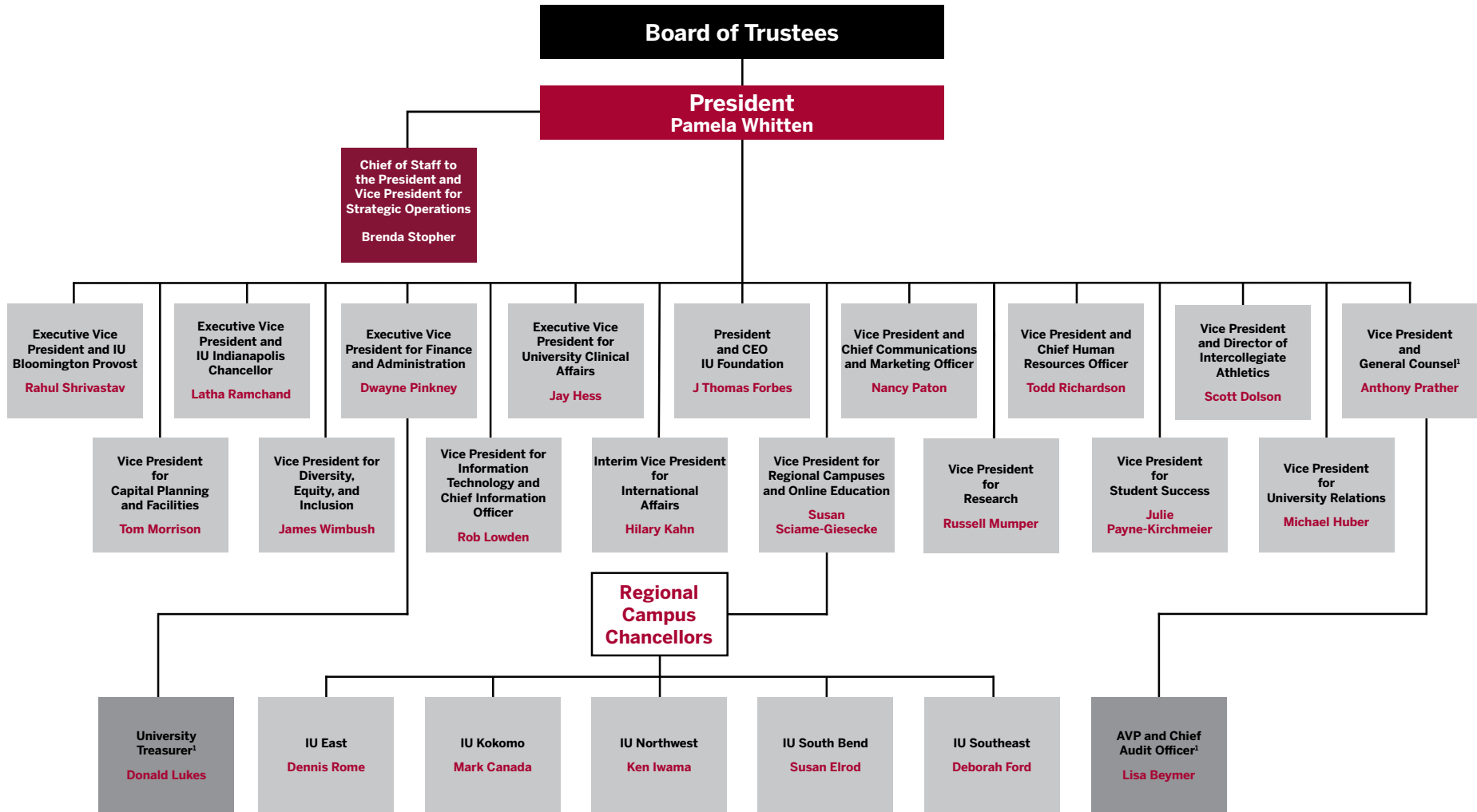


# Indiana University

President's Cabinet



<sup>1</sup>Also reports to the Board of Trustees

## Indiana University

- **Board of Trustees**
  - **President Pamela Whitten**
    - **Chief of Staff to the President and Vice President for Strategic Operations Brenda Stopher**
    - **Executive Vice President and IU Bloomington Provost Rahul Shrivastav**
    - **Executive Vice President and IU Indianapolis Chancellor Latha Ramchand**
    - **Executive Vice President for Finance and Administration Dwayne Pinkney**
      - **University Treasurer<sup>1</sup> Donald Lukes**
    - **Executive Vice President for University Clinical Affairs Jay Hess**
    - **President and CEO, IU Foundation J Thomas Forbes**
    - **Vice President and Chief Communications and Marketing Officer Nancy Paton**
    - **Vice President and Chief Human Resources Officer Todd Richardson**
    - **Vice President and Director of Intercollegiate Athletics Scott Dolson**
    - **Vice President and General Counsel<sup>1</sup> Anthony Prather**
      - **AVP and Chief Audit Officer<sup>1</sup> Lisa Beymer**
    - **Vice President for Capital Planning and Facilities Tom Morrison**
    - **Vice President for Diversity, Equity, and Inclusion James Wimbush**
    - **Vice President for Information Technology and Chief Information Officer Rob Lowden**
    - **Interim Vice President for International Affairs Hilary Kahn**
    - **Vice President for Regional Campuses and Online Education Susan Sciame-Giesecke**
      - **Regional Campus Chancellors**
        - **IU East Dennis Rome**
        - **IU Kokomo Mark Canada**
        - **IU Northwest Ken Iwama**
        - **IU South Bend Susan Elrod**
        - **IU Southeast Deborah Ford**
    - **Vice President for Research Russell Mumper**
    - **Vice President for Student Success Julie Payne-Kirchmeier**
    - **Vice President for University Relations Michael Huber**

The President's Cabinet is composed of the vice presidents, the chief of staff, and the president and CEO of the IU Foundation.

<sup>1</sup>Also reports to the Board of Trustees